



Borough of Chambersburg

*A full service municipality in Franklin County
celebrating over 65 years of consumer owned natural gas service
over 100 years of community electric and a
regional wastewater, water, and municipal solid waste utility*

CURB AND SIDEWALK PERMIT APPLICATION

This application was developed to administer the curb, sidewalk and driveway entrance permit as defined in the Code of the Borough of Chambersburg, Chapter 254, Article V. Curb, sidewalk and driveway entrance permit information must be submitted on this form. Please complete the application and return it to Borough Hall, Second Floor, 100 South Second Street or fax or email it to Amber Kerstetter at 717-251-2471 or akerstetter@chambersburgpa.gov.

Contractor Name, Address & Phone Number: _____

Contact person's name: _____

Contact person's telephone number: _____

Is this a duplex?

Address of work location: _____

Yes No

Property owner's name: _____

PA One Call Serial Number: _____

Curb _____ (LENGTH AND WIDTH OF ROADWAY CUT)

Sidewalk ____ Driveway Entrance ____ Drain under sidewalk ____ Wheel chair ramp ____

A permit fee of \$45 will be collected for Borough Streets and a \$75 fee will be collected for State Routes. Also, a fee will be collected to cover Borough costs associated with permanent restoration for excavation work associated with curb repair or construction on a Borough Street or State Route. A fee will not be collected for permanent restoration if the street where the excavation takes place is scheduled for reconstruction or overlay within 12 months of the date of the excavation permit.

A certificate or other evidence from an insurance company certifying that the permittee has comprehensive general liability and automobile insurance must be provided along with the application for permit.

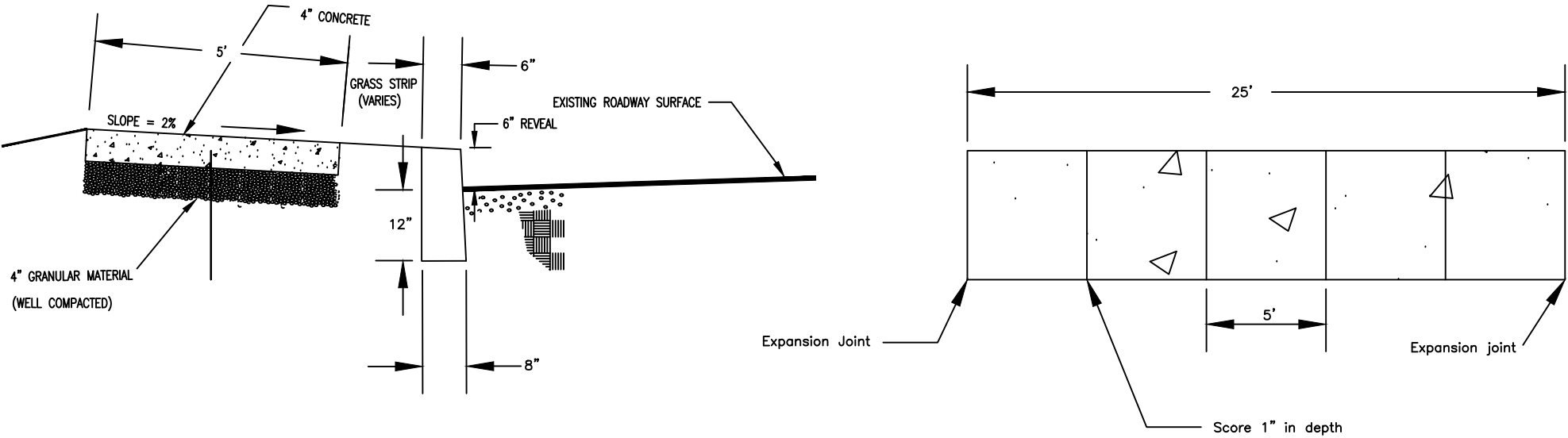
The contractor will be responsible for backfill with 2A aggregate compacted in not more than eight inch (8") layers to within two inches (2") of the roadway surface. The work area must be marked at all times with the proper warning devices, as referenced in Penn DOT Publication No. 203 entitled "Work Zone Traffic Control."

The contractor must contact the Pennsylvania One Call System, Inc. at 811 or 1-800-242-1776 no less than 3 nor more than 10 business days before digging anywhere in the Commonwealth, including excavation on a Borough Street or State Route.

Permits for Borough Streets are generally issued within one hour from the time of application receipt; however, permits for State Routes can take a week or longer to process according to PennDOT Highway Occupancy Permit regulations.

TYPICAL CROSS SECTION OF PROPOSED WALKWAY

Note: If drainage swale runs behind sidewalk, slope sidewalk toward swale.



(NO SCALE)



PENNSYLVANIA ONE CALL SYSTEM, INC.
1-800-242-1776

PENNSYLVANIA LAW REQUIRES
THREE WORKING DAYS NOTICE
BEFORE EXCAVATION

UTILITY LOCATIONS SHOWN
HEREON ARE APPROXIMATE.

BOROUGH OF CHAMBERSBURG

100 S. Second Street
Chambersburg, Penna.



Borough of Chambersburg

Concrete Sidewalk Maintenance Guide

The Borough of Chambersburg has a lot of experience with concrete sidewalks and wants to help you understand how to preserve and protect your new sidewalk. Most notably, we want to help you avoid spalling, which occurs when the surface of the concrete breaks off, flakes or becomes pitted, exposing the aggregate underneath.

Concrete is an amazing material. Soft and easy to manipulate during installation, it soon sets into a solid, stone-like material. This process, called setting and curing, doesn't happen instantly. While concrete will become firm and hard quickly, it remains relatively weak until completely cured, a process that can take some time, depending on temperature and other conditions. How you treat your new concrete will affect it for years to come.

Tips to help your concrete sidewalk cure and prevent spalling:

Apply Cure and Seal Compound – The Borough will require you or your contractor to apply a cure and seal compound on your newly poured sidewalk. It will form a tough and protective covering that acts as a barrier for low moisture transmission and maximum development of the concrete's strength and wear resistance during the early hardening stage.

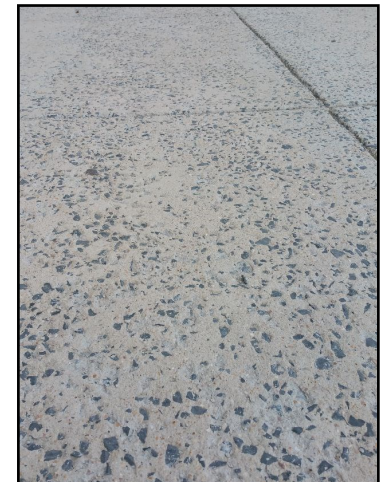
Keep It Wet – Keeping your new sidewalk wet, especially when it is exposed to direct sunlight, will help during the curing stage. Saturating your new sidewalk with water at least one time daily for at least 14 days after installation will enhance curing and prevent spalling.

Avoid Salt and Deicers – The Borough requires ice to be removed from sidewalks within 24 hours after it collects on your sidewalk. Deicing chemicals can cause spalling. Using salt or deicers during the first winter after your concrete has been poured is especially harmful, but you should avoid using them at any time. Use sand or kitty litter instead or, if salt or deicers are used, be sure to sweep them off the sidewalk as soon as the ice has melted.

Remove Snow – The Borough requires snow to be removed from sidewalks within 24 hours after it collects on your sidewalk. Use care when plowing or shoveling your sidewalk. Lift the blade up so that it does not scrape or scar the concrete surface. Using a snow blower with rubber blades will also help avoid damage.



New Sidewalk



Spalled Sidewalk

PERMIT REQUIRED

A Curb and Sidewalk Permit must be secured for concrete curb or sidewalk maintenance or new construction. Cure and seal compound specifications will be provided along with your permit. Please contact the Borough Engineering Department at 717-264-5151 with questions about this guide or for assistance with a Curb and Sidewalk Permit.